

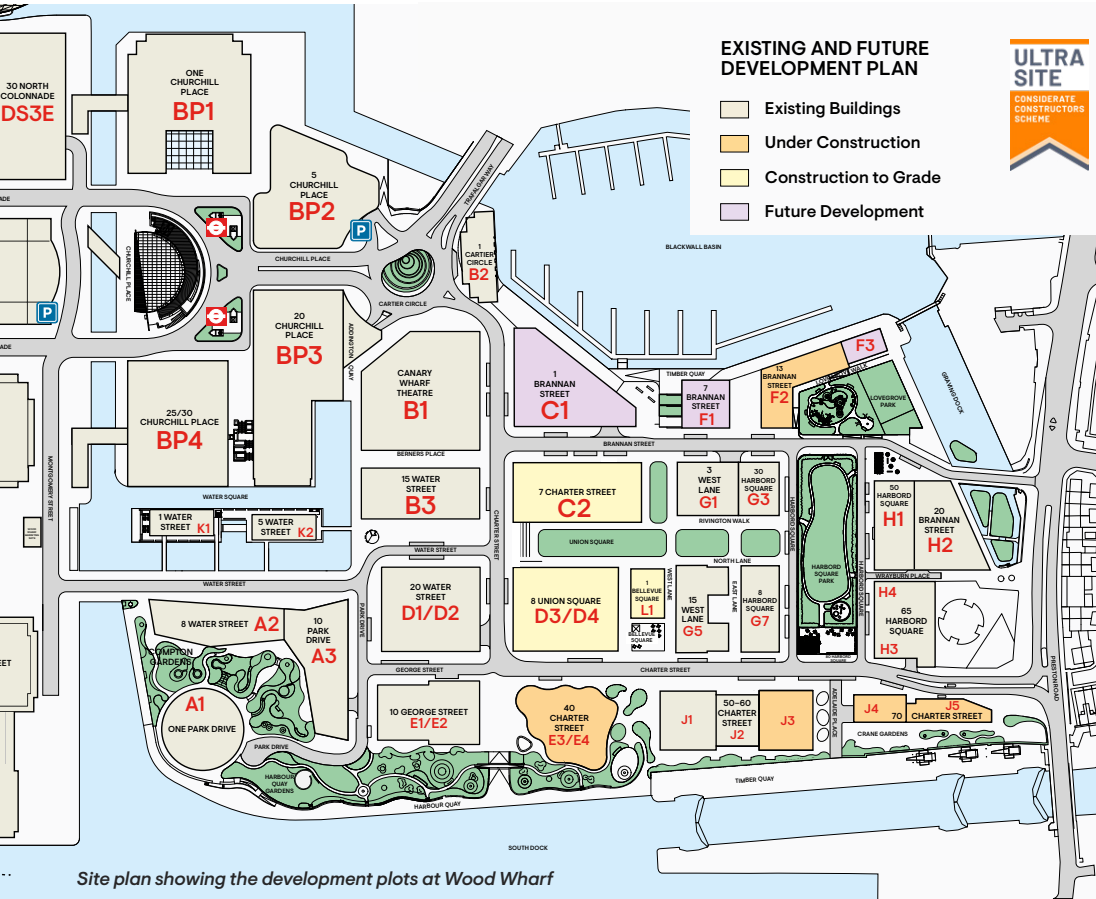
APR 2026

# CANARY WHARF DEVELOPMENT UPDATE



# WOOD WHARF

## CONSTRUCTION UPDATE



## 70 CHARTER STREET

### J4/J5 – AFFORDABLE RESIDENTIAL

Hoist now removed and all façade works completed. Fit-out works to the 222 units is progressing well, with final decoration, commissioning and snagging ongoing. Building is targeted for handover Q4 2026.

## 13 BRANNAN STREET

### F2 – AFFORDABLE RESIDENTIAL

The 72 apartment finishes will complete this month with commissioning well under way. The external works and community centre are progressing well and on programme to complete in Q3 2026.

## 40 CHARTER STREET

### E3/E4 – RESIDENTIAL

Apartment finishes now complete with amenity levels fit out works and commissioning progressing on programme. When complete, this will deliver 552 rental units run by Vertus with amenity spaces and terrace. Completion early 2027.

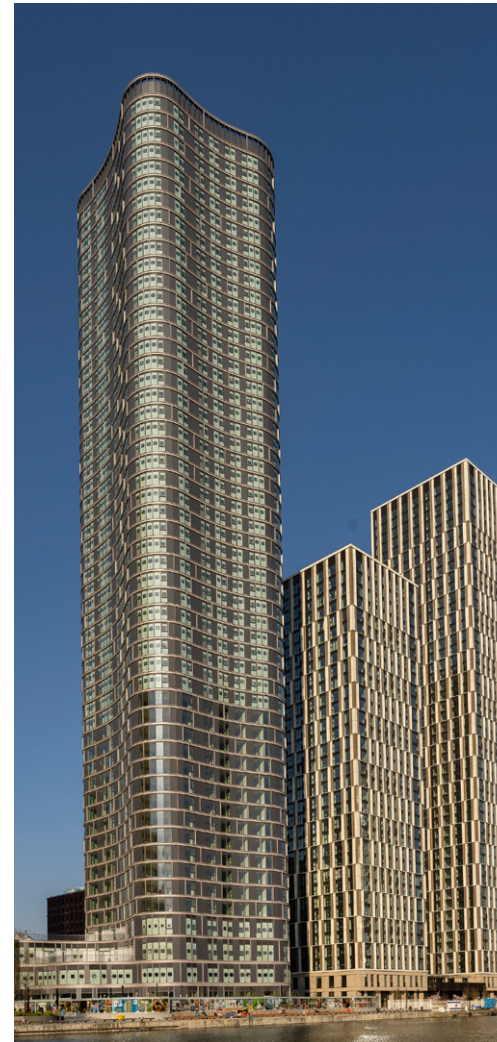


50-60 Charter Street roof terrace

## 50-60 CHARTER STREET

### J1/J3 – RESIDENTIAL

J3 is making good progress and remains on target to handover to Vertus in July 2026. This building will add 446 build to rent apartments, raising the total delivered to 756. It includes spaces built with co-living in mind including elegant private dining spaces, lounge spaces, state-of-the-art gym and studio space, large terraces and even a karaoke room.



40 Charter Street and 50-60 Charter Street

## 1 CARTIER CIRCLE

### B2 – APARTHOTEL

Construction works now complete with the fittings installation nearing completion. This will be the home of the Locke Hotel opening in May.



Locke London Canary Wharf

# WOOD WHARF

## RETAIL AND LEISURE

**More Yoga** is now open and, on a mission, to make yoga truly accessible – affordable, inclusive and welcoming to all, regardless of experience, background or flexibility level.

### COMING SOON

**Locke London Canary Wharf** will bring a distinctive hospitality offer to the estate – a 19-floor hotel with 279 characterfully designed rooms, vibrant social spaces and panoramic views across the London skyline. The property draws inspiration from the iconic architecture that defines Canary Wharf, and carries the bold, design-led identity that Locke has become known for.

**Whole Foods Market** will also be opening in Wood Wharf, offering a curated selection of local, organic and plant-based food and drink.



More Yoga – 17 West Lane



Locke London Canary Wharf

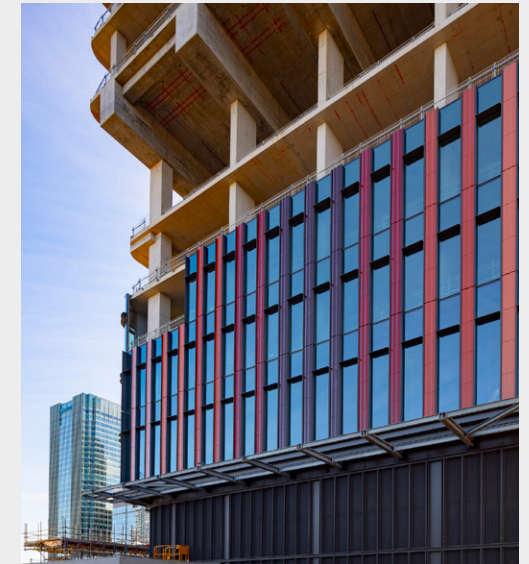


Locke – apartment interiors

# NORTH QUAY

## CONSTRUCTION UPDATE

The One North Quay concrete structure is making great progress and the building is really taking shape. The North slabs are currently at level 16 with the south slabs following swiftly behind at level 14. The concrete superstructure is due to top out Q4 2026. The building is now fully encapsulated with safety screens, which are hydraulically jacked up the building, spanning 3 floors. The screens are an additional safety measure to ensure the works within the slabs are contained.



Terracotta Cladding panels



Concrete Superstructure

The Civil and Utilities works are progressing on the north elevation with sheet piled cofferdams underway to facilitate the deep drainage installation. Internally, the blockwork, which forms the rooms within the building, continues to make good progress up to level 9. The MEP trades are working within the risers from the basement up to level 9 and works have commenced on the first plant floor, level 5. There are 3 plant room floors at level 5, 12 and 19, these floors are double height due to the size and quantity of plant required for the building.

The impressive terracotta cladding is progressing well on the north, east and west elevations, with the first curved panels installed. Terracotta is a natural clay fired product and at One North Quay the terracotta has a bespoke fusion glazed finish in five different colours, forming a gradient around the façade. There will be approximately 4000 panels on the building in total!

# COMMUNITY



CWG employees volunteering at The Felix Project

## OPENING DOORS INTO THE CONSTRUCTION INDUSTRY

North Quay and Wood Wharf opened their doors to the next generation of aspiring builders and the local community to inform and inspire them with a career in Construction. 93 people visited over the two days in March, meeting our team, learning about the developments, and participating in a site tour to get a close-up of what working in the Construction Industry is really like.

Debbie Iley from Build UK said:

*“I recently had the opportunity to visit the Wood Wharf development for my Open Doors visit, hosted by CWG – and it’s an impressive example of modern construction at scale.*

*I attended alongside civil engineering students, and it was great to see their engagement. Experiences like this are vital in showcasing the opportunities within construction and inspiring the next generation. A fascinating visit to a project that’s helping to shape the future of Canary Wharf.”*



Open Doors event



# UPCOMING DEVELOPMENTS



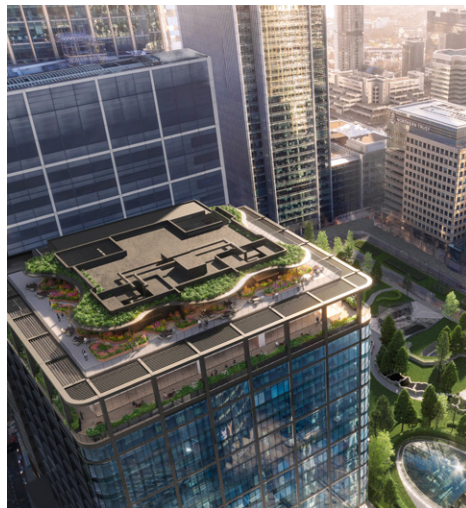
CGI indicative only – 33 Canada Square

## 33 CANADA SQUARE

We have recently launched One Eden, the landmark offices formerly known as 33 Canada Square, after securing planning consent for a comprehensive refurbishment.

The office building, which will be brought forward on a pre-let basis, will span more than 545,000 sq. ft of workspace, plus retail amenities.

The refurbishment will make the building all-electric in operation, redesign the ground-floor entrances and interiors, and add urban greening and biodiversity enhancements. There is also an option for a rooftop restaurant.

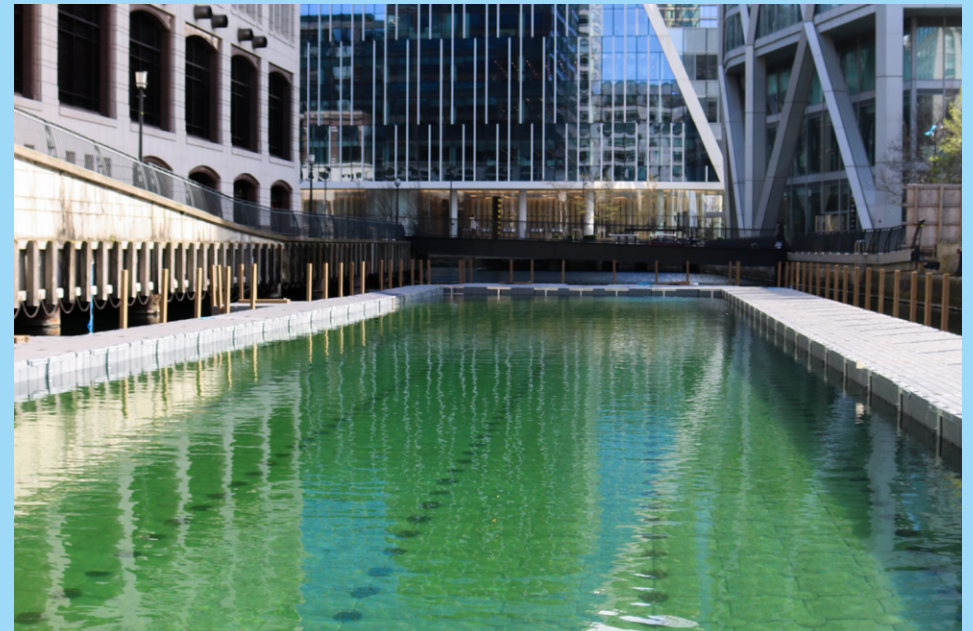


CGI indicative only – 33 Canada Square roof garden

## SEA LANES CANARY WHARF

Opening this June at Eden Dock, Sea Lanes Canary Wharf will bring a six-lane natural water floating lido, sauna, dockside dining and drinks.

Construction is underway, levels being checked, lines being set, and every block carefully placed to create the structure that everything else will sit on. This stage might look simple, but it's one of the most important parts of the build. Getting the foundations right means everything that follows works exactly as it should, from the pool itself to the spaces around it. Slow, precise, and built to last. Sea Lanes Canary Wharf is taking shape, one layer at a time.



# PROPOSALS FOR 8 CANADA SQUARE

We are in the process of developing a proposal to adapt 8 Canada Square, which was originally built as the headquarters for HSBC, into a more flexible, sustainable and welcoming destination that supports a diverse range of uses and thriving community. It is anticipated this will be submitted to the London Borough of Tower Hamlets by Summer 2026.

The proposal includes introducing a mix of complementary uses within the building and an engaging public realm. Our approach focuses on adapting and upgrading the existing structure which will significantly reduce environmental impact while unlocking new opportunities for activity and use.



CGI indicative only – 8 Canada Square



## Key changes to the building include:

- A reconfiguration of the existing floor space to create spaces that suit a wider range of uses
- A mix of new complementary uses such as workspace, leisure, retail and public spaces
- Better integration and activation at street level via the new routes through the building, linking to streets, the Elizabeth line, Canada Square and a new northern promenade offer
- A new hotel to support Canary Wharf's growing hospitality offer
- A new experience combining food, drink and leisure at the top floor
- A renewed façade creating a distinctive identity
- Increased planting and greening to support biodiversity
- Improved daylight, ventilation and openness within internal spaces

It is important to us that our proposals benefit the community, to view in full and share your comments please visit our website [here](#). The public consultation is open until 30 April.

# NEW OPENINGS AT CANARY WHARF

## THE IDEA STORE CANARY WHARF HAS HAD A £1.4 MILLION MAKEOVER!

We are pleased to share that Idea Store Canary Wharf has officially reopened after a £1.4 million refurbishment project, delivering a brighter, more modern, and accessible space for the local community. Earlier this month, Lutfar Rahman, Executive Mayor of the London Borough of Tower Hamlets

joined us alongside CWG's Managing Director of ESG, Sophie Goddard, to unveil a commemorative plaque and mark the grand reopening.

The refurbishment, jointly funded by Tower Hamlets Council and CWG, represents a significant investment into one of the borough's flagship library and learning hubs.

Open Monday to Sunday, Idea Store Canary Wharf offers a number of useful resources, services and activities for our local community and visitors to enjoy.



Idea Store – Churchill Place



Mayor of LBTH and Mulberry Primary School attend the opening of Idea Store Canary Wharf



Post Office – 6 South Colonnade

## KUNG FU MAMA

Kung Fu Mama has opened in Jubilee Place, bringing the vibrant flavours of Taiwan's night markets to Canary Wharf with a fresh, bright and healthy twist.



Kung Fu Mama – Jubilee Place

## YOUR NEW POST OFFICE BRANCH

The Post Office is now open for trade in its new location at 6 South Colonnade, where it will continue to operate as one of their main style branches. The previous branch at 5 Chancellor Passage, Cabot Place, has now closed. Full Post Office Services, including stamps, vehicle licensing, bill payments, foreign currency exchange, travel money, travel insurance, banking services, passport check and send are available.

# COMMUNITY

## TOWER HAMLETS AND CANARY WHARF FURTHER EDUCATION TRUST

The Tower Hamlets and Canary Wharf Further Education Trust (THCWJET) is a joint initiative led by the council and CWG. Since it was established in 1990, it has supported more than 4,500 residents of the borough.

The trust's mission is to promote further and higher education as well as vocational training for Tower Hamlets residents, with a particular focus on those in the greatest need of financial support to make the journey through education and into employment.

The closing date for applications is 26 June 2026

Please see link below for full details:

[Tower Hamlets and Canary Wharf Further Education Trust](#)



**Further Education Trust**

From friendly advice to giving counselling for a living.

We're here to invest in you and your future. Apply now for a further education grant [www.towerhamlets.gov.uk/further](http://www.towerhamlets.gov.uk/further)



### What do previous applicants have to say about the scheme?

*"The trust fund is a great resource for students like myself who cannot fund their education costs. I have only been able to complete my Masters with the help of this fund. My career prospects are now much wider. I feel I can now compete on an international level of professionalism within the film and TV industry. I thank the trust fund for helping me get this far."*

Seemab - MA Filmmaking

*"I benefited immensely from the grant I was awarded to pay my college fees. I wouldn't have been able to complete this stage of my gardening course without it."*

Dymphna - City & Guilds in Hard Landscaping



New mural at Old Ford Primary School, Bow

## CORPORATE VOLUNTEERING BRINGS A FOREST TO LIFE AT OLD FORD PRIMARY SCHOOL

After the recent school holidays, Old Ford Primary School in Bow returned to a wonderful surprise: a newly transformed playground brought to life through corporate volunteering. Over two days, 42 CWG volunteers came together to support the school's Artist in Residence in creating a large-scale, forest themed mural for the Reception playground.

Inspired by the woodland illustration style of *The Gruffalo*, the mural is both playful and purposeful. Expressive trees, birds and friendly forest animals sit alongside letters and numbers painted onto leaves, rocks and mushrooms, turning the wall into an interactive outdoor learning resource. Designed for children aged 4-5, the mural encourages learning through play – from spotting the first letter of a child's name to counting objects and recognising numbers while moving along the wall.

If you have any questions about any of our projects please contact us on:

[consultation@canarywharf.com](mailto:consultation@canarywharf.com)

